

FMIU020X Available soon

classic

24" Built-in Microwave Oven
Fingerprint-Proof Stainless Steel

EAN13: 8017709247959

"Classic" Design

Microwave with grill, multiple programs

Fingerprint-proof stainless steel finish

8 automatic programs

Automatic defrosting by time or weight

Stainless steel interior cavity

Lateral opening door

Single LED display

Quick start option

Child-safe control lock

9 3/4" turntable

Microwave power: 800 W

Broil element: 1000 W

20 W internal light

Dimensions: W 23.4" x H 13.5" x D 15"

Voltage rating 120V 60Hz

Connected load (nominal power): 1,350 W

Amps 120 V - 11 Amps

ACCESSORIES INCLUDED:

Frame kit for built-in installation

1 grid



Functions





Main Oven



Microwave:

Penetrating straight into the food, microwaves cook very quickly and with considerable energy savings. Suitable for cooking without fat, they are also able to thaw and heat food without altering its original appearance and aroma. The microwave function can also be combined with conventional functions with all the resulting advantages. Ideal for all types of food.



Defrost:

The circulation of air at room temperature enables quicker thawing of frozen food, (without the use of any heat). Ideal for use prior to cooking of readymade dishes, or cream filled products etc.



Microwave + broil element:

To achieve a combined cooking with broil that cooks the outside whilst assuring an internal cooking thanks to the microwave function.



Broiler:

For rapid cooking and browning of foods. Best results can be obtained by using the top shelf for small items, the lower shelves for larger ones, such as chops or sausages. For half grill heat is generated only at the centre of the element, so is ideal for smaller quantities.

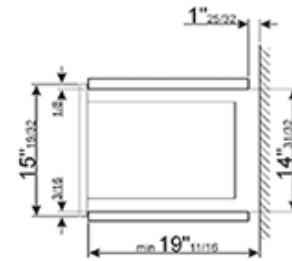
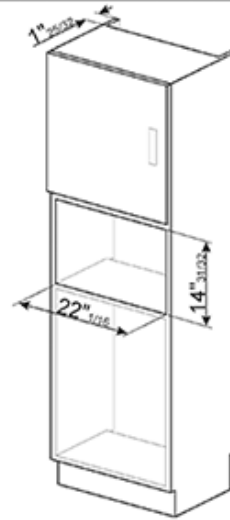
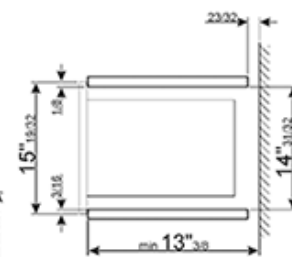
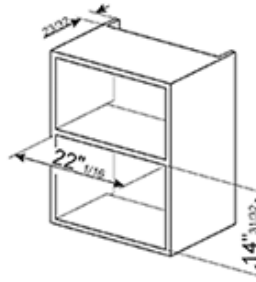
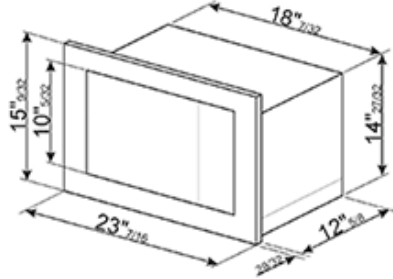


FMIU020X

classic

microwave
24"

antifingerprint st/steel



SMEG U.S.A. INC.
A&D BUILDING
150 EAST 58th STREET, 7th FLOOR
NEW YORK, NY, 10155
Tel. +1 212 265 5378
Fax +1 212 265 5945